

G R O W
U P T O
W O O D



FOREVER WOOD. FOREVER MEMORIES.

It has been around you forever.

In the melody of the sparrow, in the sweetness of the berries, in the bliss of your swing and in the comfort of the shade.

It never asked you for anything. The times you needed shelter from the rains, whisper sweet nothings to the hatchlings or simply needed to embrace something familiar, it greeted you with a smile. Even when you never thanked, or acknowledged it, it was always there for you. Those memories may have been lost to time. Wood, however, continues to endure.

The eternal nature of wood inspires Mikasa Real Wood Floors to gift those memories back to you, offering designs that rivet the attention of all who come across it. From the rustic and earthly to the warm and inviting, our collection offers a wide variety that leaves little to imagination.

NOW CHERISH THOSE MEMORIES.

ALL OVER AGAIN.

GROW UP TO WOOD.



Mikasa ADD

Benefits of adding Mikasa into your life.

- **Availability**

The most popular wood species from across the globe made accessible to you with our large sales and service network across the country.

- **Design**

Your floor becomes an integral part of your total décor. Mikasa spoils you for choice with the largest variety of decors to choose from.

- **Durability**

The first and only brand of wooden floors manufactured in the country with the latest technology, resulting to products fully supported with warranties of up to 30 years.

WEAVING MAGIC INTO YOUR CREATIONS

Greenlam Industries has been a hallmark of exceptional artistry and innovation. It is India's No.1, Asia's largest and among the top 3 brands in the world offering surfacing solutions spread across laminates, compacts, veneers, engineered wooden floors and doors. With a presence in more than 100 countries, Greenlam is carrying its innovation and artistry forward, with Mikasa Real Wood Floors.

Made for the first time in India, Mikasa is the only manufacturer of real wood floors in the country. With more than 100 unique products in an expansive portfolio, Mikasa showcases the

largest selection of engineered wooden flooring. Each piece of wood, naturally beautiful, is further enhanced using the latest European technology and expert craftsmanship, thus bringing out the true character of wood. Our wide-ranging collection brings together the most exotic species of wood from around the world, to accentuate the beauty every space.

We create the finest floors for those who have the finest taste.







EXCELLENCE IN EVERY LAYER

Mikasa floors consist of three layers composed of Real Hard Wood, Stabilizing Core and Balancing Layer. Put together using the most modern technology, this construction provides solidity and stability to every plank while restricting the expansion and contraction of wood, giving your floor the resilience to stand the test of time and climate.

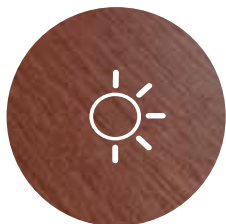


THE BOND THAT LASTS FOREVER PlankLOC™

A revolutionary technology that locks two planks together without using glue, ensuring that the joints that bind the two planks never open up.

PlankLOC™ allows for ease of installation, giving a seamless look to your floor that withstands the effects of seasonal change and foot traffic.

FINISHES



SATIN LACQUER

Adds lustre to the wood without hiding its character. It makes the surface pleasing to the underfoot as well as being easy to maintain.



MATT LACQUER

Gives an impression of pure and untreated wood. The subtle finish does not conceal wood's natural look while making it more durable and easier to clean.



BRUSHED

The natural structure and texture is accentuated by mechanical brushing. Enhance the beauty of a brushed floor with other treatments such as a bevelled-edge or coloured stain.



SMOKED

Wood, especially Oak, is processed to infuse a dark and smoky look to each plank. Preferred by the imaginative and artistic.



STAINED

Adds elegance and a layer of sophistication to any wood. The finish harmonises the wide variation of natural wood without covering its natural detail.

EDGES



BEVELLED EDGE

Dramatically accentuates each individual plank, resulting in a more traditional floorboard feel and lends a more rustic and classical impression.



MICRO-BEVELLED EDGE

Small, eased edges are virtually unnoticeable in between plank heights and offer a seamless connection between joints.



SQUARE EDGE

Creates a smooth, uniform surface that fuses the wood floors together from plank to plank and provides a contemporary and sleek look.





SMOKED OAK



BEAUTY IN EVERY STRIP



1



1—Strip: The grandeur of wide wood planks distinguishes large spaces with a smooth and well-balanced wooden look. Single strip planks give greater depth to spacious rooms and long passages.



2



2—Strip: Each plank displays a 2-Strip pattern to create a distinct and individual look. Ideal for mid-sized rooms. Unique mix of patterns give the room an expansive and open appearance.



3



3—Strip: The versatile and imaginative 3-Strip style accentuates any room size by fusing the vintage parquet floor impression with a modern edge and flair without any hassle.



4



Herringbone: The versatile range of Herringbone collection allows the flexibility to customise every living space.

THE LONG AND SHORT OF REAL WOOD



3 Strip: 2420mm x 195mm



2 Strip: 2420mm x 185mm



1 Strip: 2400mm x 210mm



1 Strip: 2100mm x 185mm



1 Strip: 2100mm x 135mm



1 Strip: 1800mm x 185mm



1 Strip: 1800mm x 135mm



1 Strip: 1200mm x 152mm



1 Strip: 1200mm x 120mm



HERRINGBONE: 540mm x 90mm

A photograph of a modern interior space, likely a lounge or office, featuring a large window that looks out onto a lush green landscape. The interior has a concrete ceiling and a wooden floor. The window is divided into several panes by dark frames. Outside, there is a well-maintained golf course with a green and a sand trap, surrounded by a dense forest of tall, green trees. The text "DID YOU KNOW THAT CUTTING TREES CAN HELP SAVE THE ENVIRONMENT?" is overlaid in white, bold, sans-serif capital letters across the center of the image.

DID YOU KNOW
THAT CUTTING TREES
CAN HELP SAVE THE
ENVIRONMENT?

We're all aware that trees are essential for the sustenance of our planet, because they replenish the oxygen in our atmosphere. However, as they begin to wilt and decay, they release CO₂ into the environment. This greenhouse gas is toxic for our environment. And, one of the key cause of global warming. Surprising, isn't it?

Mikasa takes care and harvests trees right before they are about to decay and release CO₂ into our environment. Mikasa understands its responsibility towards our planet, and plays its part in monitoring CO₂ emissions across the globe.

Building towards a sustainable future, we ensure our wood is ethically sourced from the world. Designed with a disposable system for the recyclable waste, the installation process and the water-based lacquers and stains are eco-friendly. So, rest assured that the wood adorning your space is as ethical as it is pristine.



PRISTINE 15mm

Another name for perfection, Pristine is our standard setting wooden flooring range. Fascinating and inviting, this 15mm wooden flooring expresses its stylishness in exquisitely crafted detail. A collection to soothe any soul.

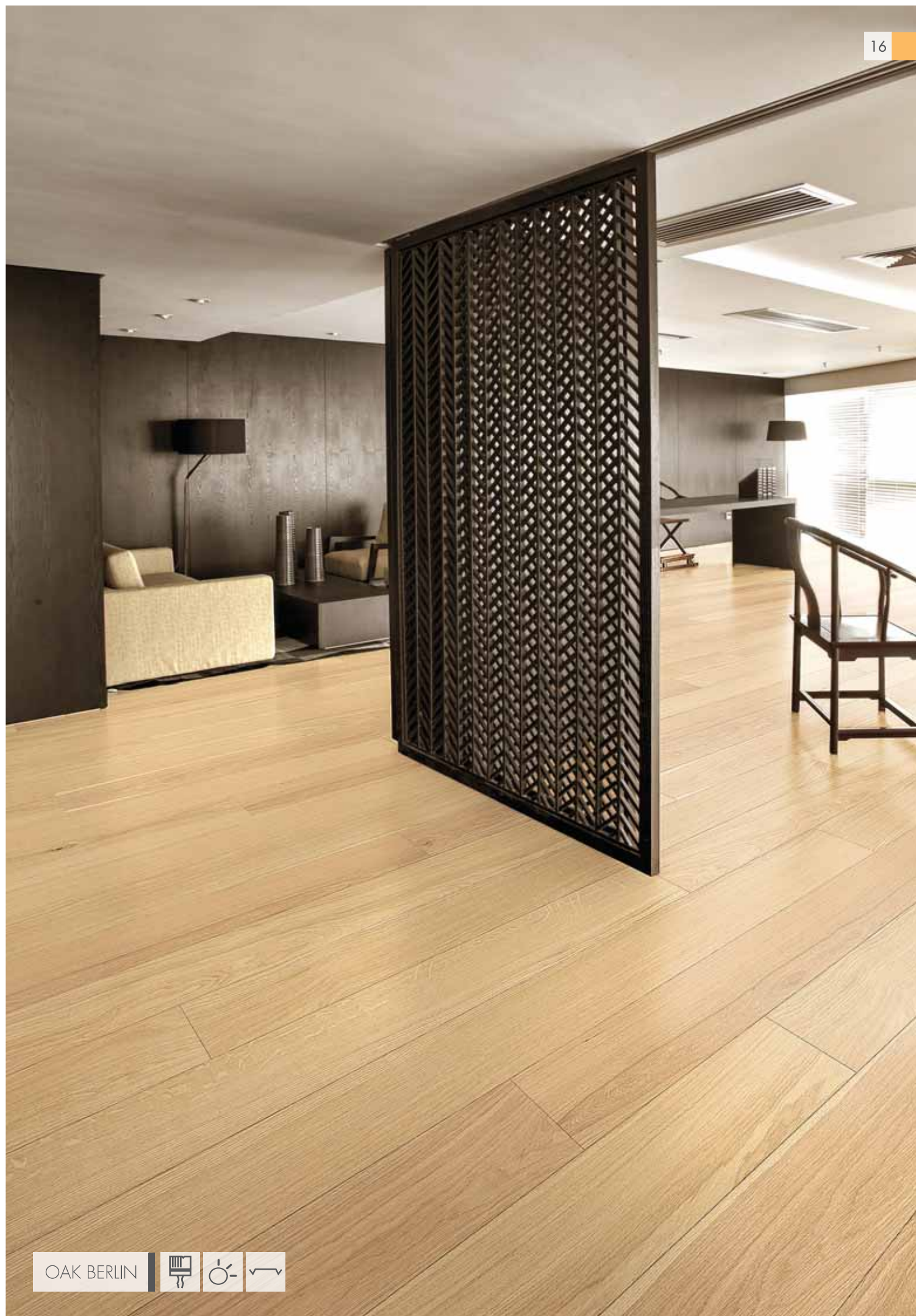
PRISTINE CITY

Oak in its purest form, Pristine City is available in distinctive yet equally appealing variants. Natural, Brushed, Matt and Satin finish Oak floors are offered in 1-Strip, 2-Strip and 3-Strip formats.







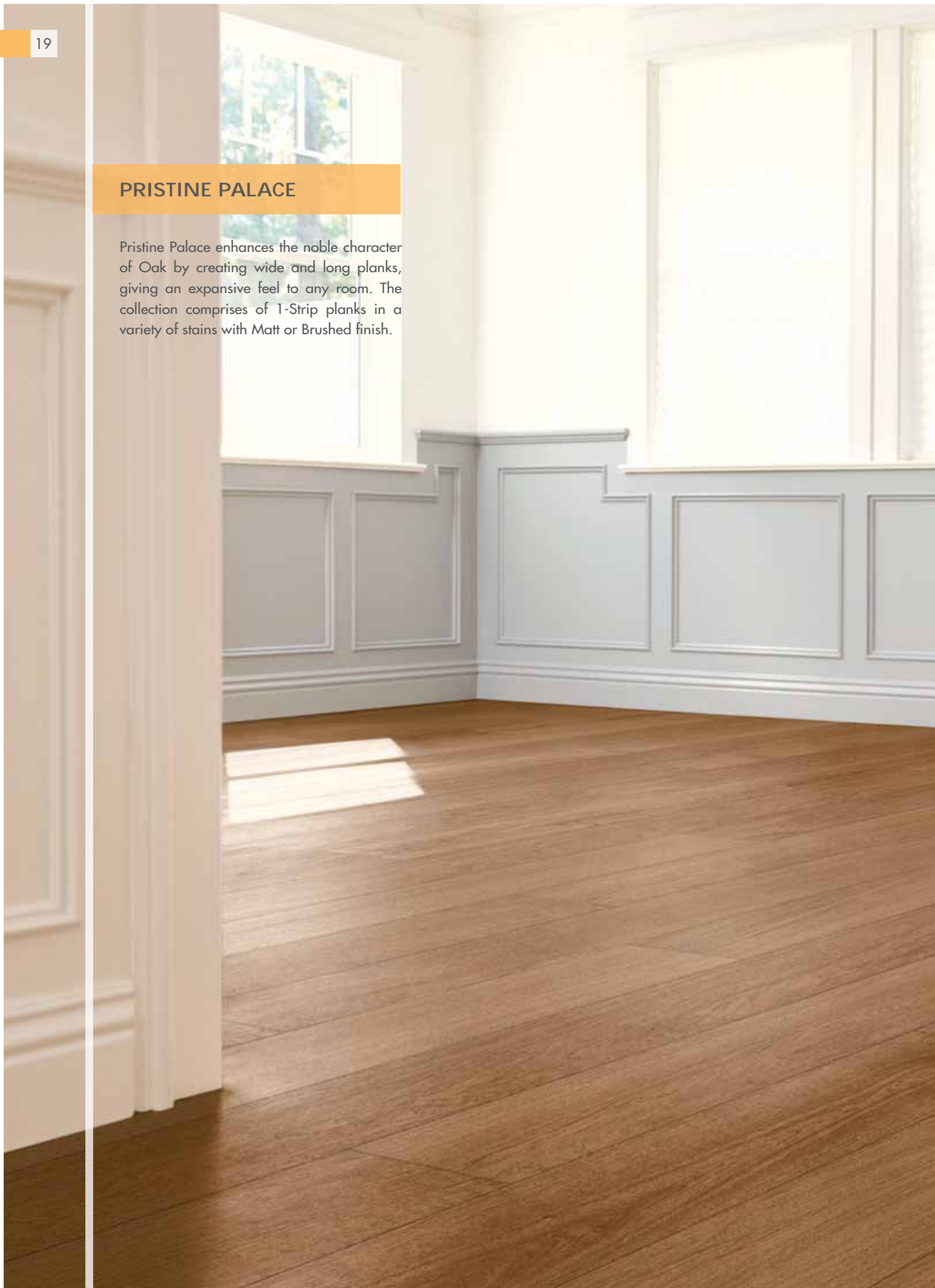






PRISTINE PALACE

Pristine Palace enhances the noble character of Oak by creating wide and long planks, giving an expansive feel to any room. The collection comprises of 1-Strip planks in a variety of stains with Matt or Brushed finish.





OAK RADIANT







OAK SPRING





OAK MOONLIGHT





OAK LUMEN







OAK WINTER







OAK NOIR







PRISTINE ESTATE

The Estate Collection infuses a timeless and majestic look to the wooden flooring. The Estate Collection is offered in a distinguished Stained finish in 2-Strip format to accentuate Oak's natural look.













PRISTINE FUMOIR

Giving your floor a deep and dusky look, the Fumoir Collection offers Smoked Oak complemented by an exquisite Brushed finish. Available in 1-Strip and 3-Strip formats.





OAK FUME





OAK SMOKEHOUSE





OAK MOSS



PRISTINE VERMONT

A collection of Walnut wood from North America is offered in its natural look and with a Stained and Non-Stained finish. Mikasa Vermont is presented in 1-Strip, 2-Strip and 3-Strip formats.





NOCE IMPERIAL

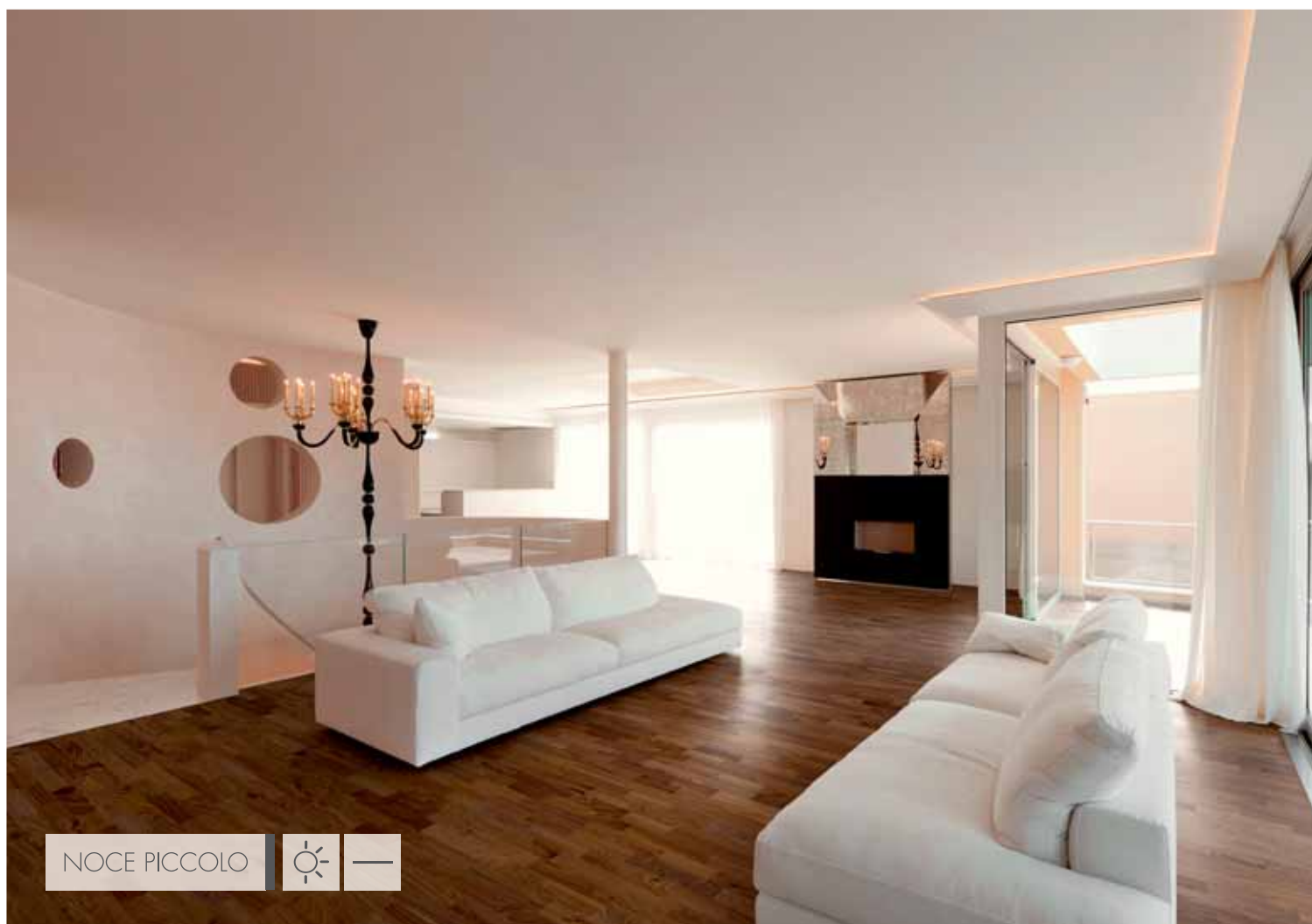


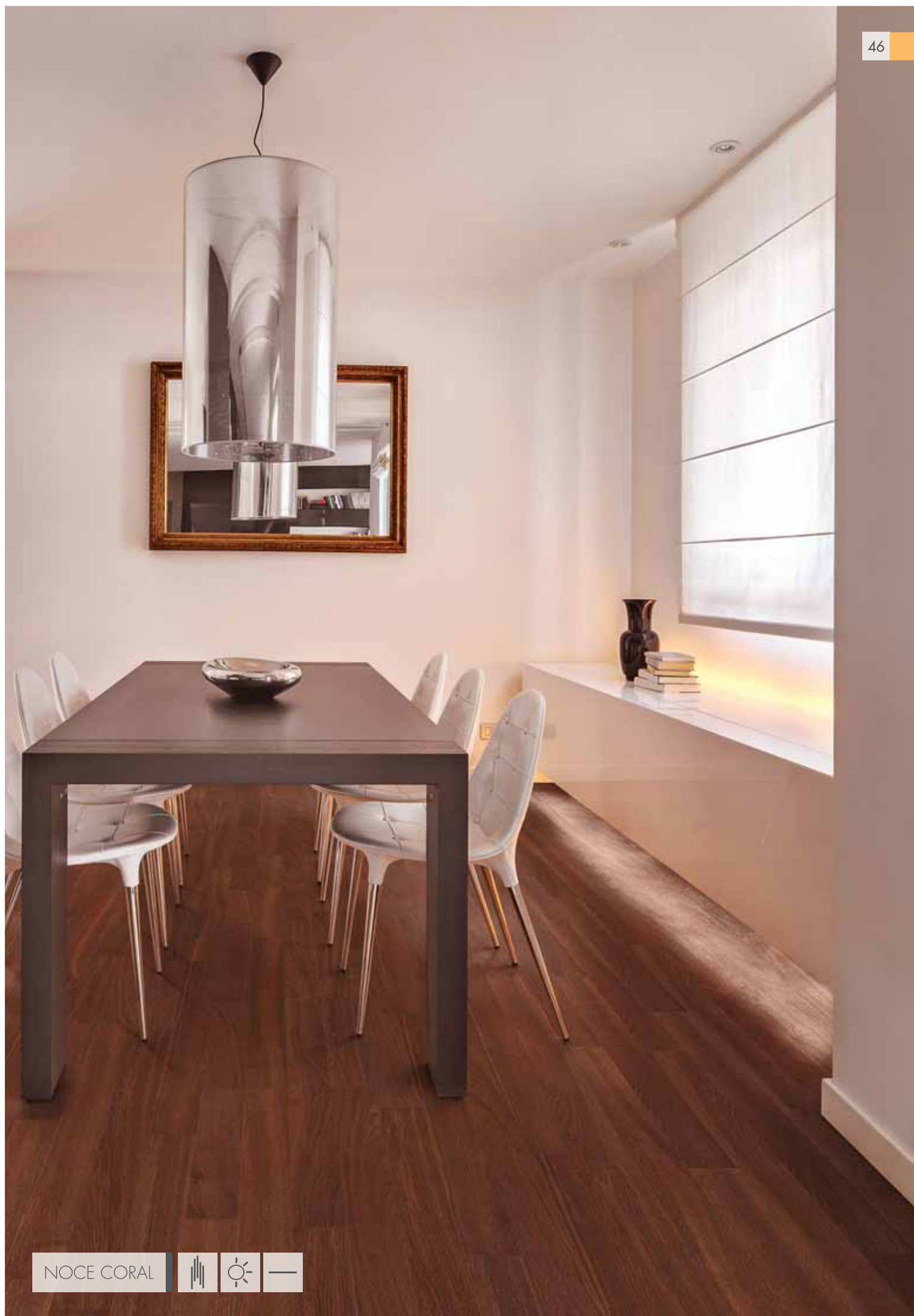




NOCE ROSSO







HERRINGBONE COLLECTION

A modern classic, the Mikasa Herringbone Collection, is engineered for stability and durability with a warranty of up to 30 years. With a thickness of 15mm and standard size offering of 540mm x 90mm, these engineered woods shall help you personalise your living space, while keeping the quintessential aesthetic of a home that is born of nature and is captivating. The Collection offerings:

HERRINGBONE SOLITARY

HERRINGBONE TWINE

HERRINGBONE
COLLECTION





NOCE IMPERIAL



HERRINGBONE SOLITARY

Nothing exudes simplicity in design like uniformity. A collection which abides by the same is the Herringbone Solitary which allows for subtle but artistic patterns made in planks of the same colour tone.





OAK SMOKEHOUSE





OAK WINTER





OAK DUSK







OAK SEA MIST







OAK SPRING





OAK LUMEN







OAK RADIANT





OAK NOIR





OAK MOONLIGHT





OAK EARTH







OAK BERLIN



HERRINGBONE TWINE

Weave character and personality in your living space with double wood patterns. Vibrant designs can be brought to life with a simple tweak of colour with the Herringbone Twine. This collection allows for ornate patterns made with planks of two different colour tones.





OAK WINTER



NOCE IMPERIAL





OAK FUME



OAK WINTER





OAK SEA MIST



OAK WINTER





OAK FUME



OAK MOONLIGHT





OAK STOCKHOLM



OAK FUME



ARBOR 13mm

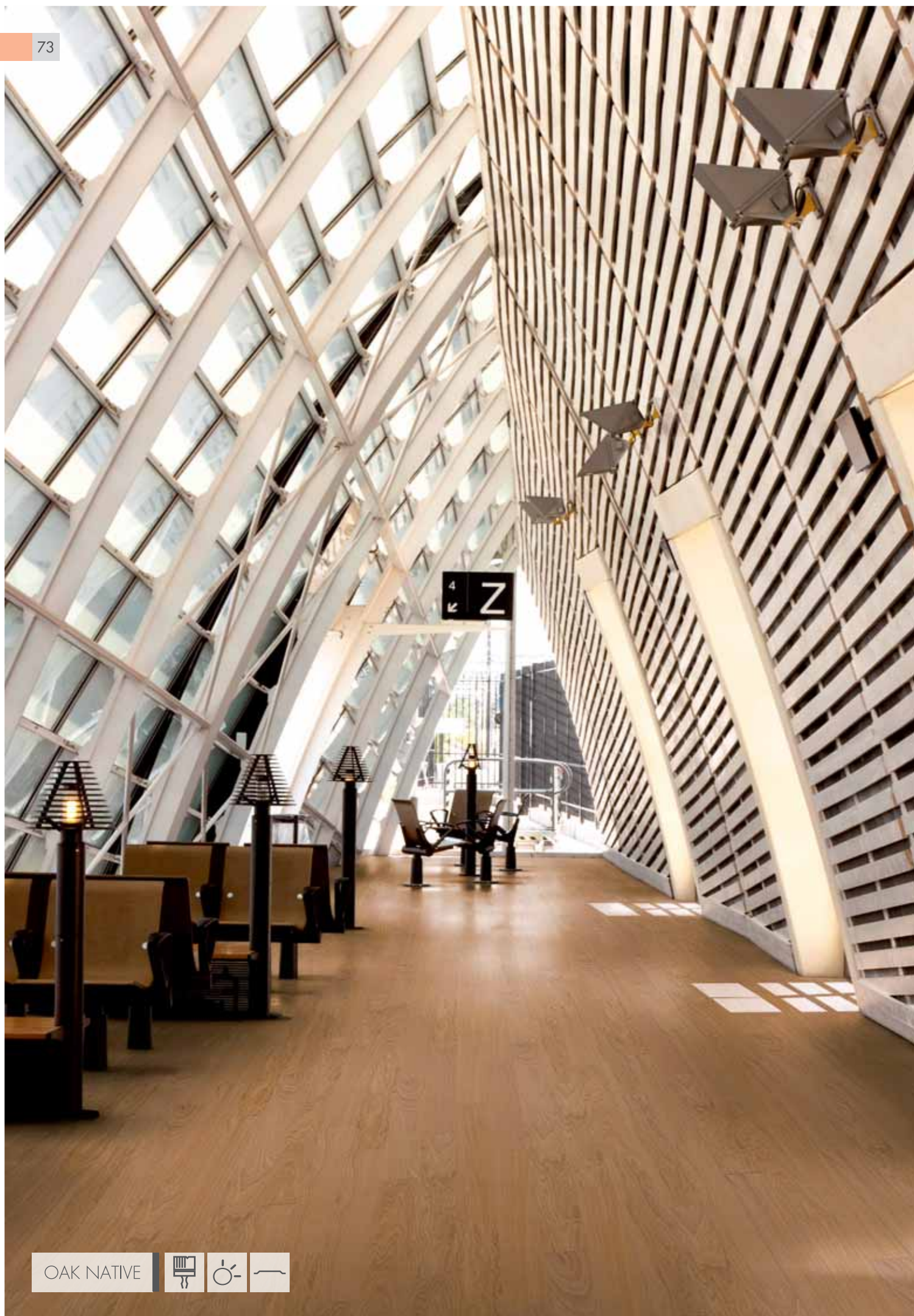
Distinct and eye-catching. Bold and inviting. Mikasa Arbor is our premium collection of 13mm flooring. Mikasa Arbor manifests itself in strikingly beautiful variety. Adorn your space with this exclusive collection and see any room come alive.

ARBOR ROVERE

Mikasa Rovere offers 1-Strip Oak in a wide range of finishes and treatments to grace your floors - Natural, Stained, Smoked, Brushed, and Satin. You are spoilt for choice.









OAK CHOCO



ARBOR ECLECTIC

True to its name, Mikasa Eclectic collection is truly universal as it offers various exotic wood species like Walnut, Teak, and Ash to choose from. These species are presented in a 1-Strip format with variations in surface refinement such as Natural, Smoked, or Stained with an option of Satin or Matt finish.

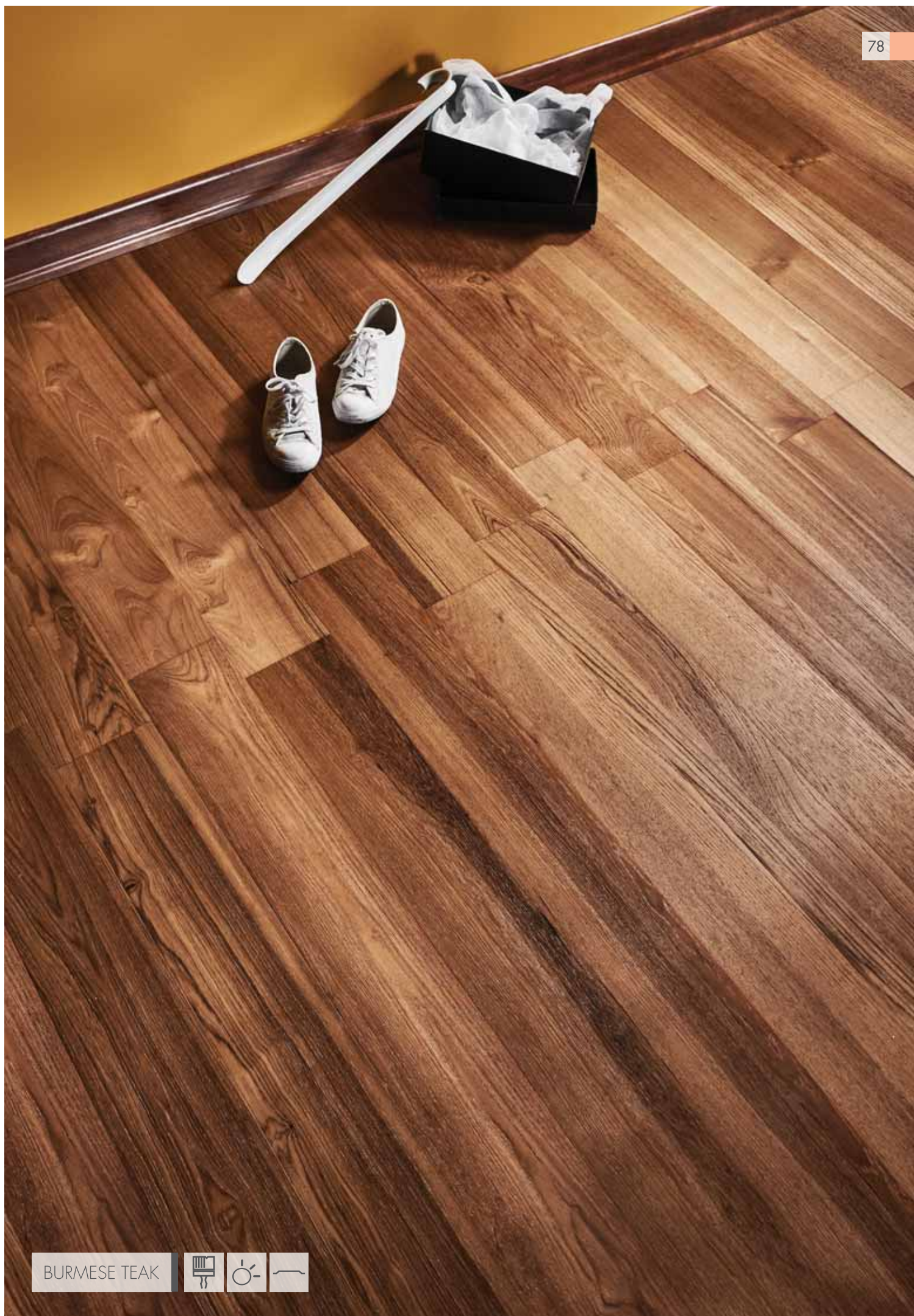






AFRICAN TEAK





BURMESE TEAK



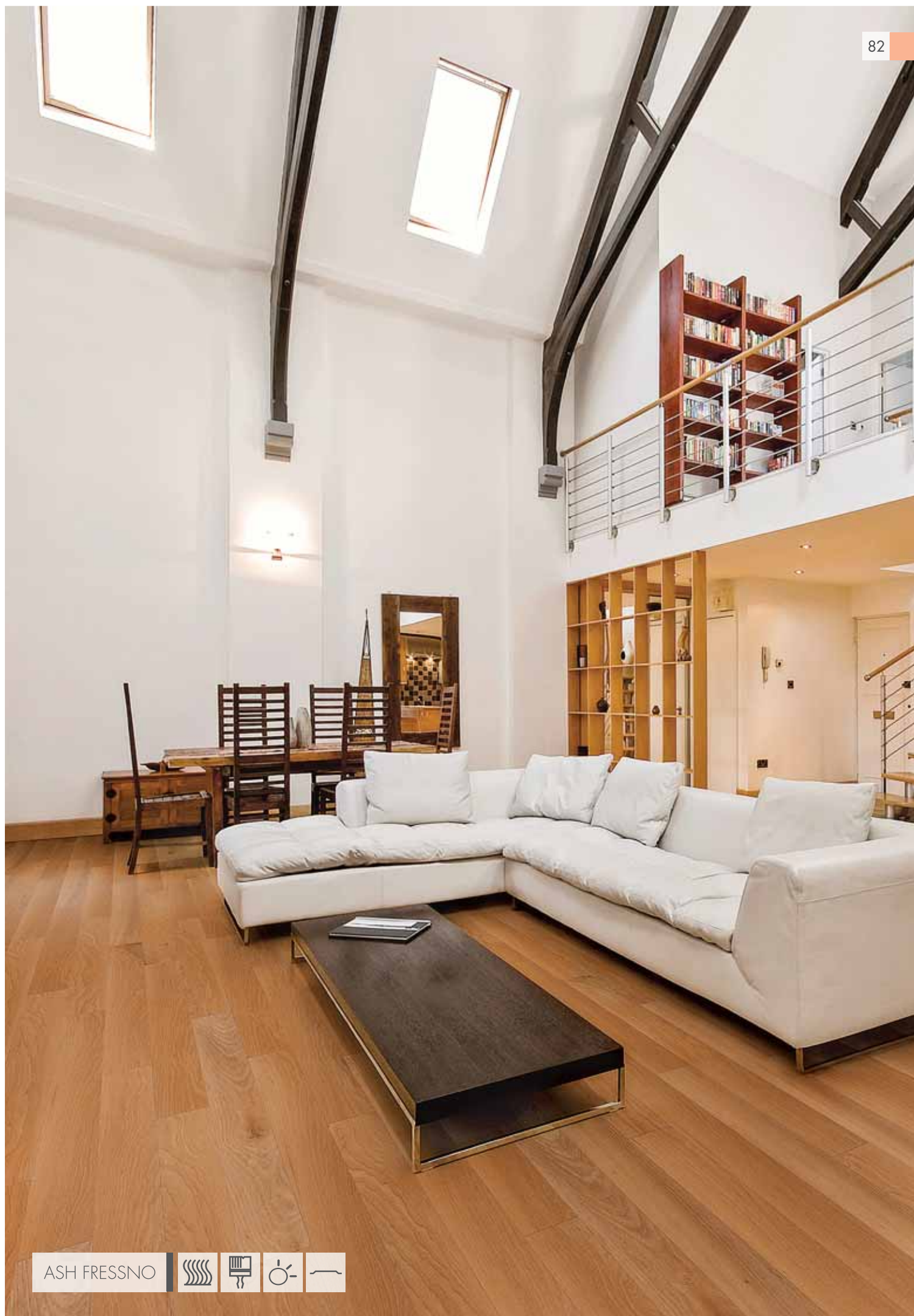




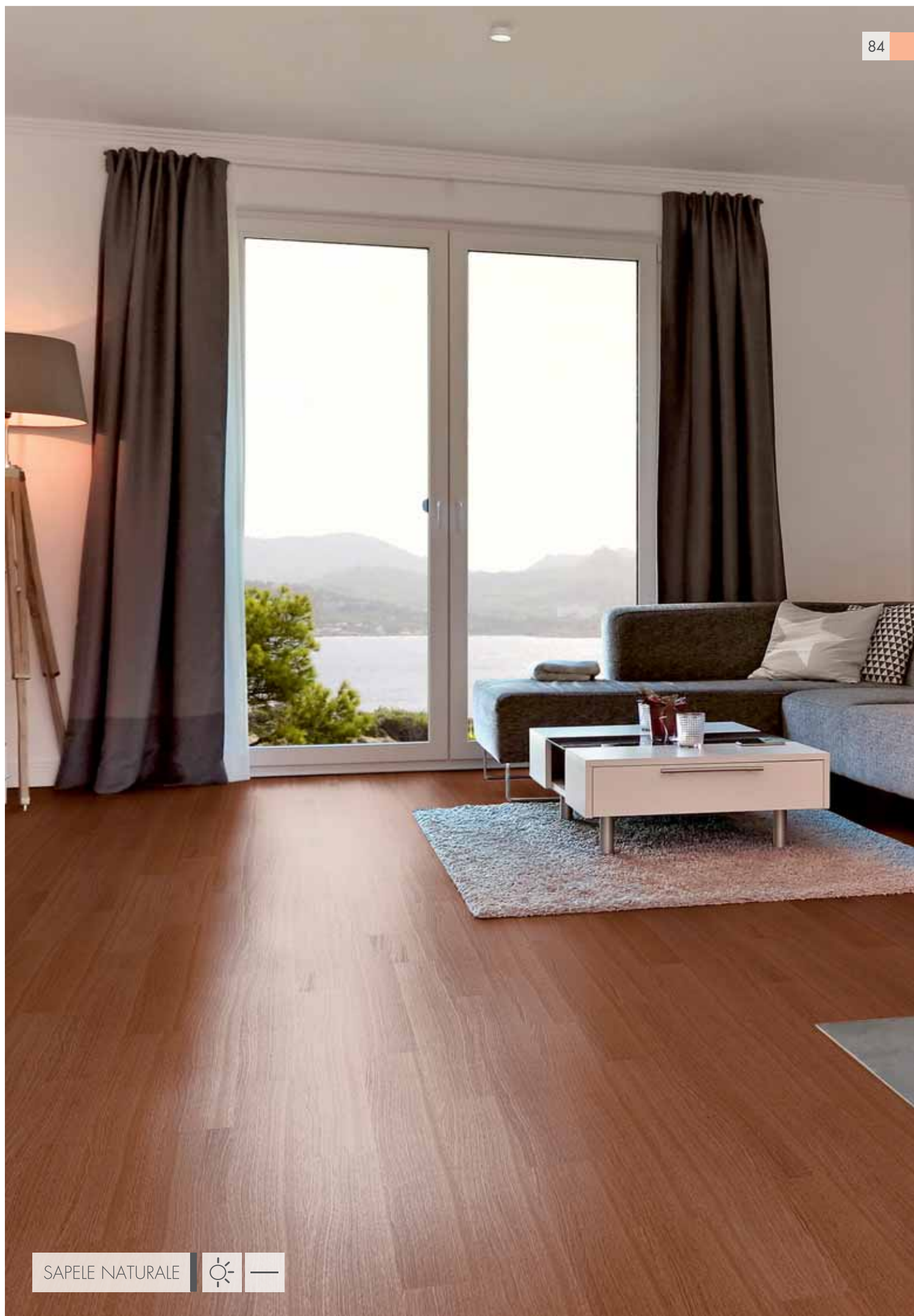
BRAZILIAN WALNUT















SMOKED SAPELE



ATMOS 10mm

Breathtakingly beautiful, Mikasa Atmos is our 'best-in-the-class' 10mm flooring with 0.6mm veneer of real wood. Truly a modern take on a traditional wood floor, Atmos will brighten up any room.

ATMOS EICHE

Atmos Eiche is a gorgeous collection of 1-Strip Oak floors presented in 10mm wooden flooring in Natural or Stained finish.





OAK CAPPUCCINO







OAK CREME

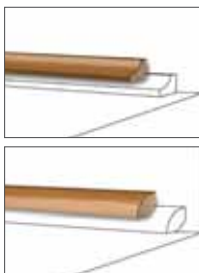






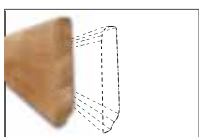
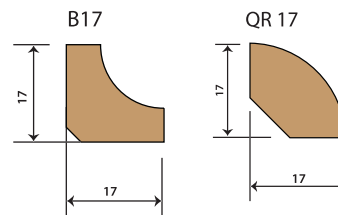
ACCESSORIES

No floor is complete without matching accessories



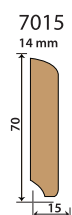
Beading & Quadrant

Beading & Quadrant of solid wood is available in a variety of colours to suit your floor. They are suitable for every Mikasa floor of varying thickness. They are used when removing an existing skirting is not possible or if you do not want a very high skirting.



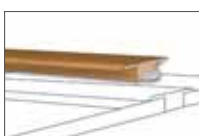
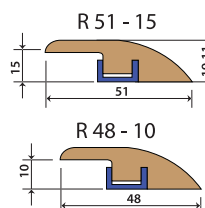
Skirting

Skirting adds the final touch to your Mikasa floors. These complement every Mikasa floor of varying thickness.



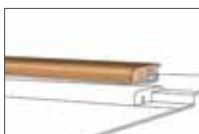
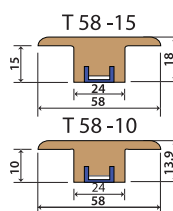
Reducer Mouldings

Reducer Mouldings are used to make a smooth transition between floors of differing heights. For example, where wooden floors meet other flooring materials such as stone floors or fitted carpets.



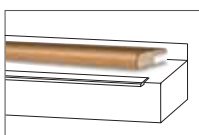
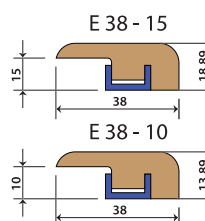
T-Mouldings

A type of moulding used in the transition between floors of the same height, where two rooms with identical flooring meet at a doorway. For example, hallways or bedrooms.



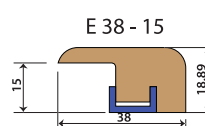
End Mouldings

Most useful when your floor meets an immovable object such as a door casing. It can also be used to cover the gap between the wooden floor and the wall or the window.



Stair Noses

Used when your floor reaches a step down, creating a perfect end to every step in the staircase.



Underlay VAPROTECT®

Mikasa VAPROTECT® - a perfect combination of PE Film and extruded foam which acts as moisture and sound barrier, and an intermediate layer.



QUICK REFERENCE GUIDE



1 Strip: 2400mm x 210mm



1 Strip: 2100mm x 185mm



1 Strip: 2100mm x 135mm



1 Strip: 1800mm x 185mm



1 Strip: 1800mm x 135mm



1 Strip: 1200mm x 152mm



1 Strip: 1200mm x 120mm



2 Strip: 2420mm x 185mm



3 Strip: 2420mm x 195mm



HERRINGBONE: 540mm x 90mm



Stained



Smoked



Brushed



Bevelled Edge



Matt Lacquer



Micro-bevelled Edge



Satin Lacquer



Square Edge



Page Number

Due to printing limitations, product colour and texture reproduced in this brochure may vary from actual product. We recommend you to please refer actual product for exact grain patterns and shades.

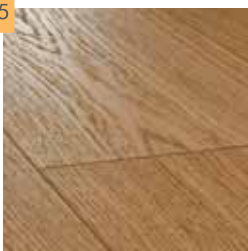
PRISTINE 15mm

Plank Thickness - 15mm | Top Layer [Veneer Thickness] - Up to 3mm

CITY

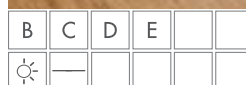
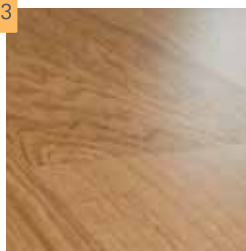
COLLECTION

15



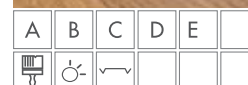
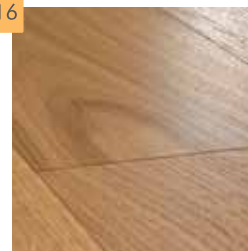
Oak Stockholm

13



Oak London

16



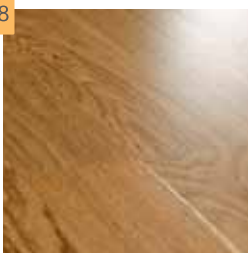
Oak Berlin

17



Oak Munchen

18

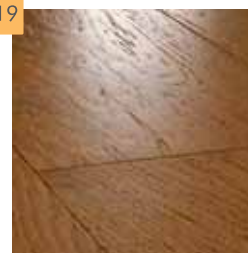


Oak Nice

PALACE

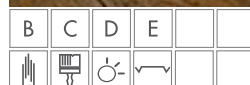
COLLECTION

19



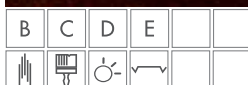
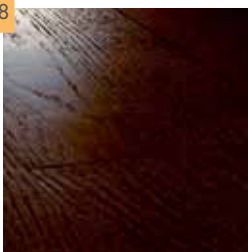
Oak Radiant

30



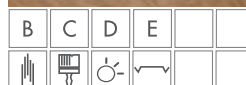
Oak Earth

28



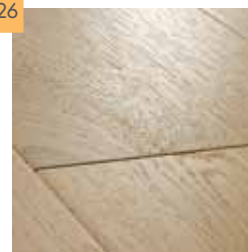
Oak Noir

23



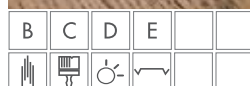
Oak Moonlight

26



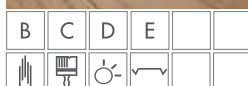
Oak Winter

25



Oak Dusk

21



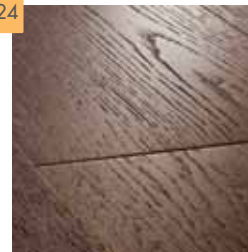
Oak Spring

27



Oak Summer

24

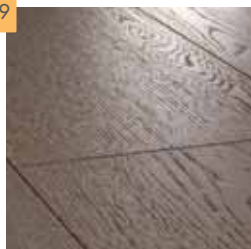


Oak Lumen

PRISTINE 15mm

Plank Thickness - 15mm | Top Layer [Veneer Thickness] - Up to 3mm

29



Oak Sea Mist

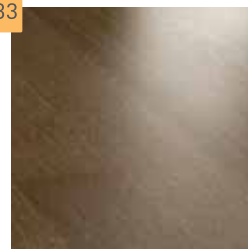
ESTATE COLLECTION

31



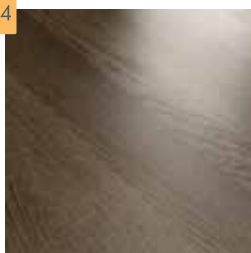
Oak Topaz

33



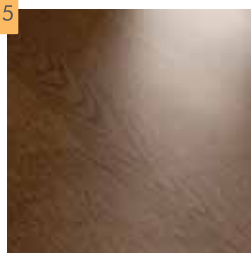
Oak Stein

34



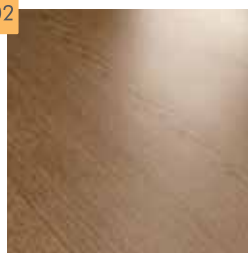
Oak Slate

35



Oak Amber

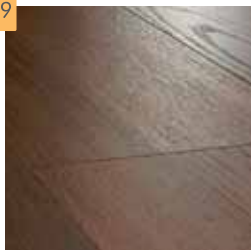
02



Oak Dune

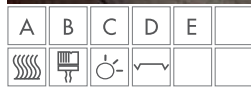
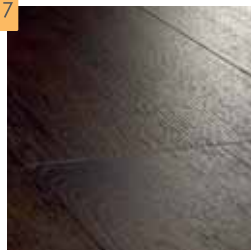
FUMOIR COLLECTION

39



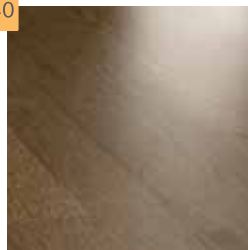
Oak Smokehouse

37



Oak Fume

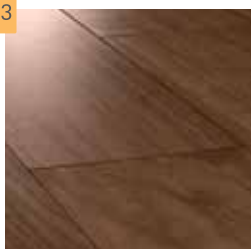
40



Oak Moss

VERMONT COLLECTION

43



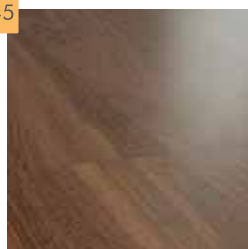
Noce Grande

41



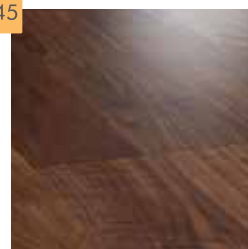
Noce Imperial

45



Noce Medio

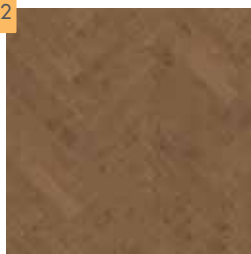
45



Noce Piccolo

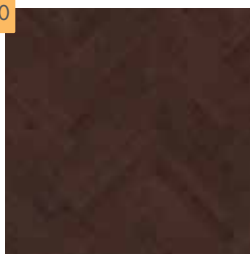


62



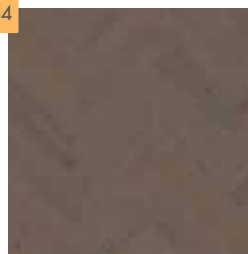
Oak Earth

60



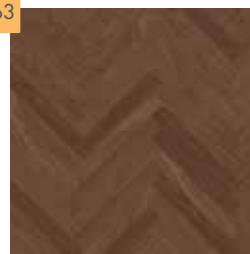
Oak Noir

54



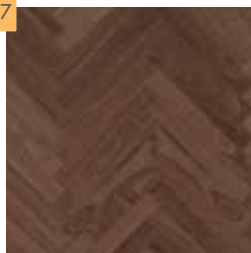
Oak Sea Mist

63



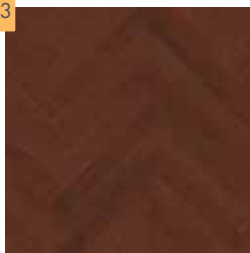
Noce Grande

47



Noce Imperial

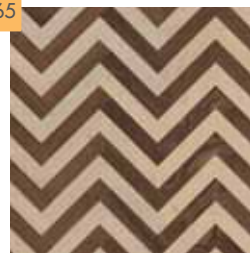
53



Noce Rosso



65

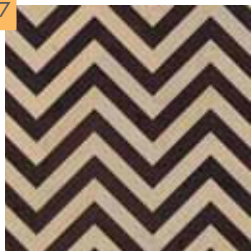


Noce Imperial



Oak Winter

67

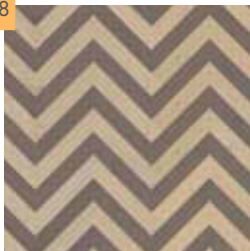


Oak Winter



Oak Fume

68

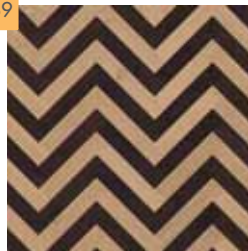


Oak Sea Mist



Oak Winter

69

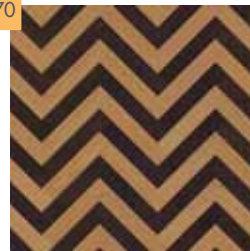


Oak Moonlight



Oak Fume

70



Oak Stockholm



Oak Fume

ARBOR 13mm

Plank Thickness - 13mm | Top Layer [Veneer Thickness] - Up to 0.6mm

ROVERE COLLECTION



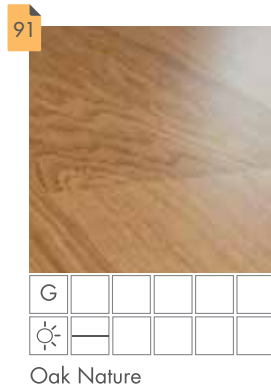
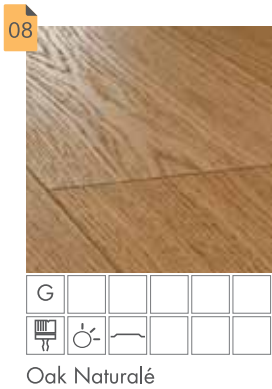
ECLECTIC COLLECTION





ATMOS 10mm

Plank Thickness - 10mm | Top Layer [Veneer Thickness] - Up to 0.6mm





GREAT REASONS FOR CHOOSING MIKASA

1. Wood. As natural as it can get. Mikasa is nothing but real wood.
2. Spoilt for choice. The largest variety of decors to choose from.
3. Engineered to provide stability in any climatic condition.
4. Mikasa floors are very easy to install, remove and reinstall.
5. Being pre-lacquered, they have a strong surface which lasts for years.
6. Fully supported by warranties of up to 30 years.
7. Made in India. With the largest network of sales and service outlets you are never far from Mikasa.

OAK FUME



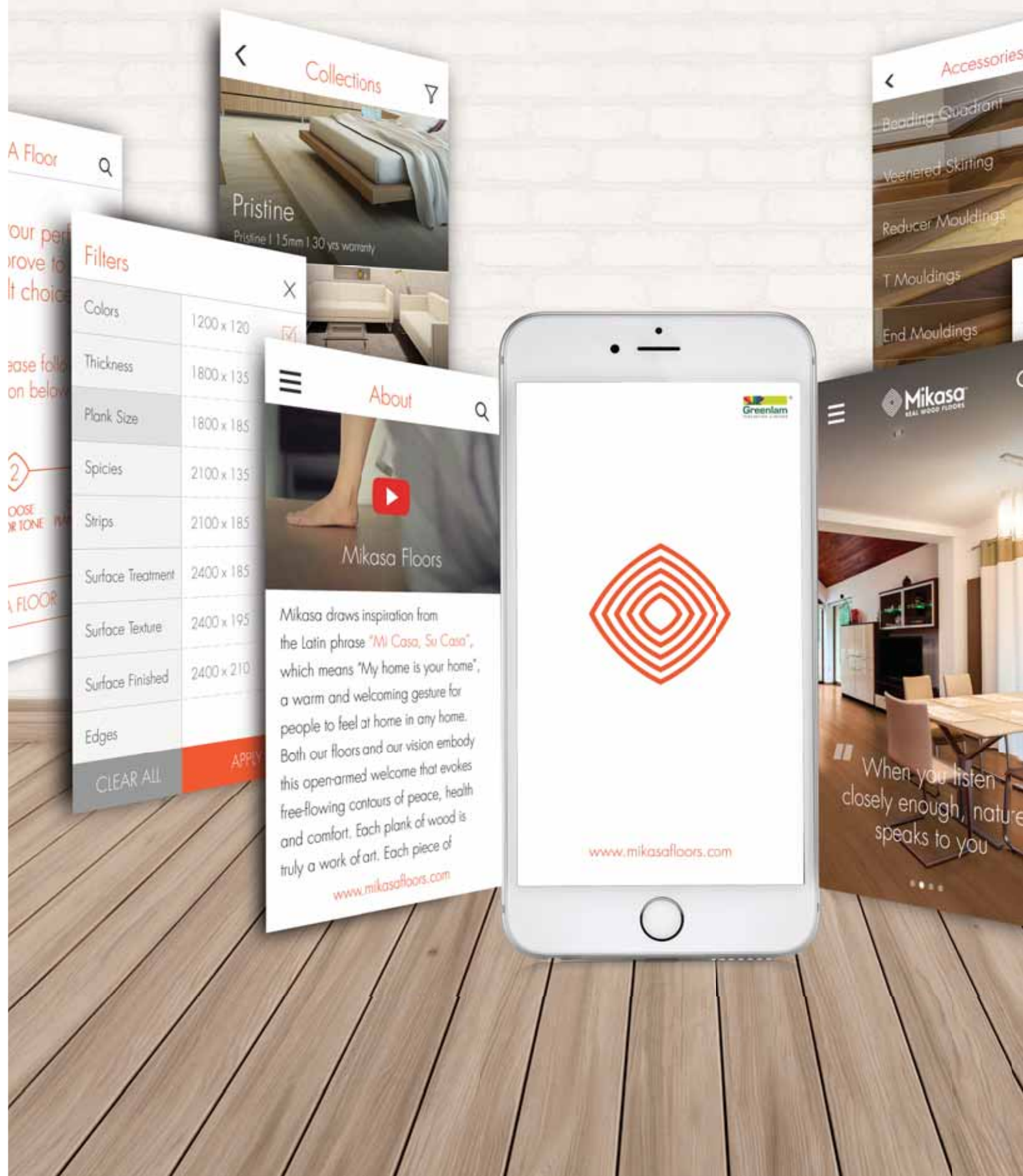
	PRISTINE		ARBOR	ATMOS
TECHNICAL INFORMATION				
Configuration	1, 2 & 3 Strips	1 Strip, Herringbone Collection	1 Strip	1 Strip
Thickness (mm)	15		13	10
Veneer Thickness (mm)	Up to 3.0		Up to 0.6	Up to 0.6
Plank Dimensions (mm)	Width: 135 - 210 Length: 1800 - 2420	Width: 90 Length: 540	Width: 152 Length: 1200	Width: 120 Length: 1200
Wood Species	Oak and Walnut		Oak, Walnut, Teak, Ash and other exotic species	Oak
No. of Planks/Pack	06 Planks	12 Planks (06 planks of profile A & 06 planks of profile B)	06 Planks	08 Planks
Sq.Mtrs/Pack	1.46m ² - 2.83m ²	0.5832m ²	1.09m ²	1.15m ²
Weight/Pack (Kg)	12.80 - 23.40	5.80	10.80	9.85
Joint	PlankLoc™, Glueless			
Core Material	Pine		High Density Fiber Board	High Density Fiber Board
Finish	Brushed, Matt, and Satin	Non-Brushed & Satin / Brushed & Matt	Brushed, Matt, and Satin	Brushed, Matt, and Satin
Warranty	30 Years in a residential environment. Check for Warranty in commercial applications.		10 Years in a residential environment. Check for Warranty in commercial applications.	10 Years in a residential environment. Check for Warranty in commercial applications.

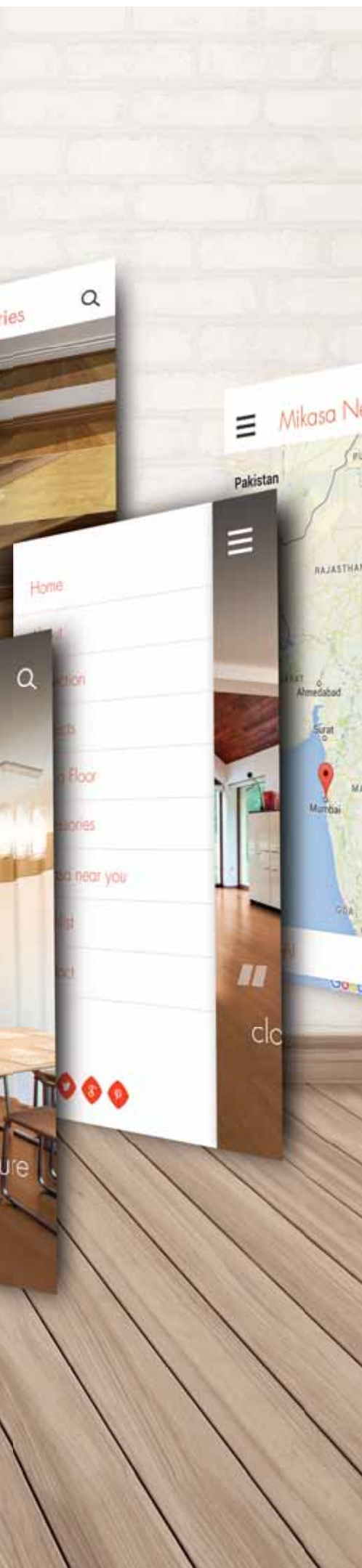
PRODUCT CHARACTERISTICS

Construction	Boards are constructed in 3 layers in order to minimize expansion and contraction within the floorboard. The direction of the fibers within each layer is oriented at right angles to the adjacent layer.		
Compliance	EN 14354		
Design	1, 2 & 3 strip plank with/without bevelled edges. MIKASA PlankLoc™ glueless joint on all edges. Surface layer consists of sliced strips of hardwood and a backing of pine/spruce veneer.	1-strip plank, with/without bevelled edge, MIKASA PlankLoc™ glueless joint on all edges. Surface layer consists of sliced or rotary cut strips of hardwood and a backing of pine/spruce veneer.	
Top Layer	The top layer is made of select hardwood and is up to 3.0mm in thickness. This allows resanding and refinishing atleast twice. Detailed information about maintenance is included in our Maintenance & Repair Guide. Download it from our website www.mikasafloors.com	The top layer is made of hardwood and is up to 0.6 mm in thickness. This does not allow any resanding and refinishing. The surface is pre-finished with several layers of UV hardened acrylic lacquer, free from formaldehyde and solvents.	
Surface Finish	The surface is pre-finished with several layers of UV hardened acrylic lacquer, free from formaldehyde and solvents.		
Moisture Content	Average moisture content at delivery is approximately 7-9%.		
Insects	The boards are delivered free of insects, woodworms etc. This is secured by the process temperatures.		
Formaldehyde Emission	The boards comply more than adequately with the stringent EU E1 norms for formaldehyde emissions.		
Fire Classifications	Wooden floors fulfill the requirements for class G, the highest fire classification for floors as per Swedish Building Code, BBR 94.		
Reduction of sound weighted index ‘footfall’ to the room below. NF EN ISO 140-8/ Acc.to NF EN ISO 717-2, ΔLw in dB with 3mm foam	17dB		
Installation	Floating/Glued down		
Chemical and Stains	Resists most household stains up to 24 hours.		
Colour Change	Wood is a natural product and changes colour with time when exposed to light.		
Underfloor Heating Compatibility	—————		Suitable for room temperature (max temperature 27°C), waterborne system or self-regulating electrical system.

Subfloor Requirement The Subfloor must be dry, clean, level and solid. The requirements in HusAMA98, Table 43.DC/-1 and MDB.3 apply. Also note our Subfloor Requirements. You can download more details on Subfloor Requirements and Underfloor Heating from our website www.mikasafloors.com

* For detailed specifications, please refer to our website www.mikasafloors.com





THE MAGIC OF MIKASA — NOW AT YOUR — FINGERTIPS

Now you are never far away from
the world of Mikasa with
the all-new Mikasa Floors App.

EXPLORE THE FASCINATING
SELECTION OF MIKASA FLOORS

LOCATE YOUR
NEAREST MIKASA DEALERS

PLACE AN INQUIRY FOR
YOUR CHOICEST PRODUCTS

TALK TO OUR
SALES REPRESENTATIVES





NOTES

NOTES





www.mikasafloors.com



Greenlam Industries Limited 2nd Floor, West Wing, Worldmark-1,
Aerocity, IGI Airport Hospitality District, New Delhi - 110037.

For a real experience with real wood, **SMS <MIKASA> to 53030** or call on **Toll Free No.: 1800-833-0004**

info@mikasafloors.com | [f](#) | [t](#) | [i](#)



We acknowledge that wood is precious and thereby all Mikasa floors use only ethically sourced wood without disturbing the natural balance of our beautiful ecosystem.

The best way to recycle this brochure is to give it to someone who needs it.

